

UTC-318

18.5" Ubiquitous Touch Computer

UTC-318D with Intel® Celeron® J1900

UTC-318G with Intel® Celeron® N3350/Pentium® N4200



DeviceOn/iService

Features

- Low power and fanless system design
- Built in Intel Celeron® J1900 (UTC-318D), Pentium® N4200 (UTC-318G)
- 18.5" monitor with 16:9 widescreen display
- IP65-rated front panel for water and dust resistance
- Supports both landscape and portrait screen orientations
- VESA 100 mm standard mounting holes for varied mounting demands
- Detachable frame design for panel mount applications
- Support DeviceOn/iService software for remote device management (UTC-318D only)
- Support TPM 2.0 (UTC-318G Optional)



Introduction

UTC-318 is the multi-purpose all-in-one computing system which equipped with wide format, touch based LCD panel. It is easy to integrate key peripherals and display systems for diversified self-service and interactive signage deploy in different application areas. With the removable frame, the system also could fulfill industries or control system applications with panel mounting design. UTC series touch panel computers are the best investments to enhance user satisfaction, further brand equity, and maximize business profits.

Moreover, UTC-318 is equipped with Advantech's DeviceOn/iService software, which is a next-generation unified device management solution based on the WISE-DeviceOn platform. With support for batch operations and multi-device control, DeviceOn/iService enables easy device configuration and deployment for convenient remote device management.

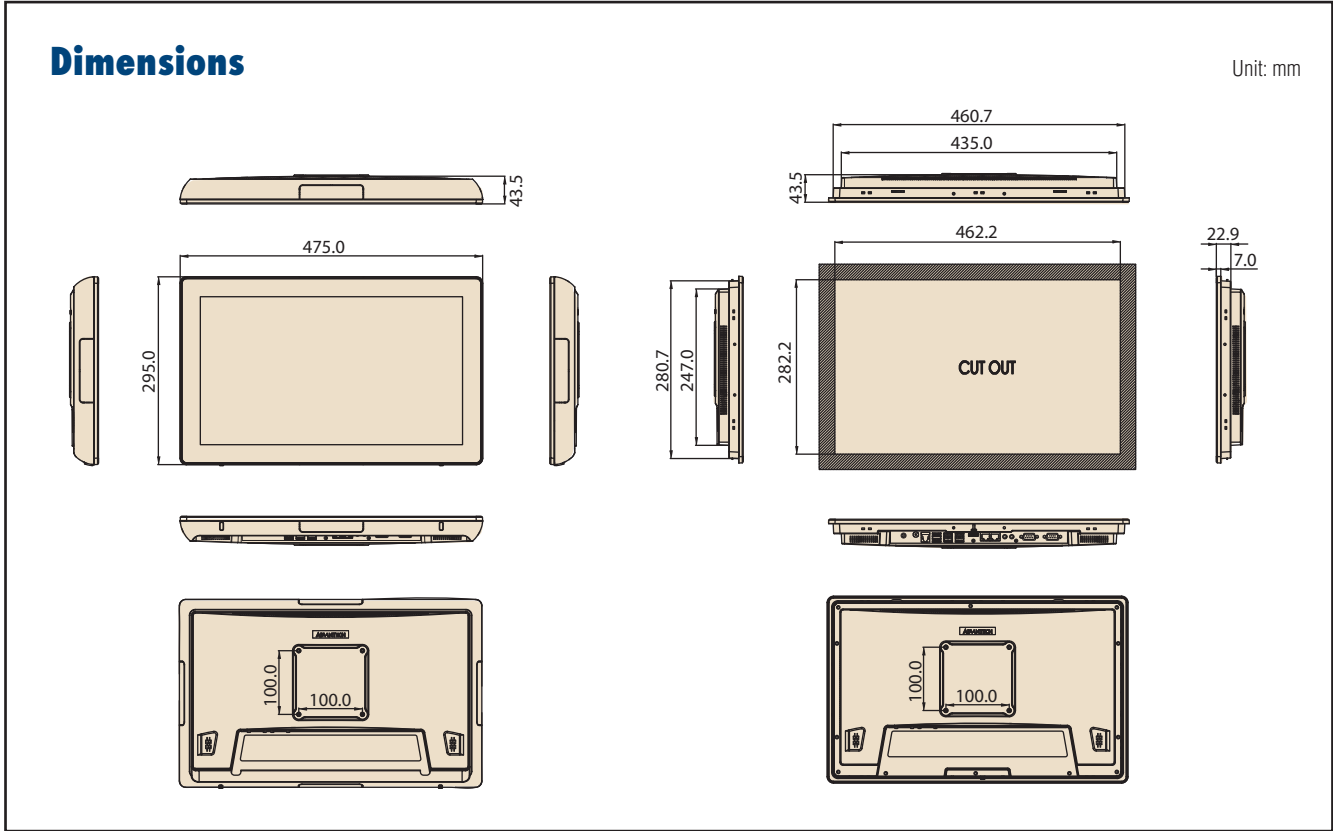
Specifications

Model	UTC-318D	UTC-318G	
Processor System	CPU	Intel® Celeron® J1900	Intel® Pentium® N4200 (Default) Intel® Celeron® N3350
	Basic Frequency	2.0 GHz (Quad-Core)	N4200: 1.1GHz (Quad-Core) N3350: 1.1GHz (Dual-Core)
	Cache	L2 Cache 2MB	L2 Cache 2MB
	Memory	1 x 204pin SO-DIMM DDR3L 1333 MHz up to 8 GB	1 x 204pin SO-DIMM DDR3L 1866 MHz up to 8GB
	HDD	1 x 2.5 internal SATA HDD bay	
	Network	2 x Gigabit Ethernet ports (RJ-45)	
	I/O ports	1 x RS-232 1 x RS-232 / 422 / 485 5 x USB 2.0 / 1 x USB 3.0 2 x Gigabit Ethernet (RJ-45) 1 x HDMI Audio Line-out x 1, Mic-in x 1	1 x RS-232 1 x RS232 / 422 / 485 2 x USB 2.0 / 4 x USB 3.0 2 x Gigabit Ethernet (RJ-45) 1 x HDMI 1 x RJ11 (12V output only) Audio Line-out x 1, Mic-in x 1
	Stereo Speaker	2W x 2	
	BUS expansion	Full-size MiniPCIe/mSATA	1x Full-size MiniPCIe for mSATA SSD 1x M.2 2230 E-Key
	Mounting	VESA 100 x 100; Screw Size: M4, 10mm	
Dimension(WxHxD)	475 x 295 x 43.5 mm		
Weight	5 kg		
Security	TPM2.0	NA	Optional
OS support	Win 10 IoT Enterprise 64bit Linux Android 6.0	Win 10 IoT Enterprise 64bit Android 10.0 Linux	
Environmental Specifications	Operating Temperature	0 ~ 40° C (32 ~ 104° F)	
	Relative Humidity	10 ~ 95% @ 40° C non-condensing	
	Vibration	0.5G	
	Shock	10 G peak acceleration (11 msec. duration)	
	EMC/ Safety	CE, FCC, UL, CCC, CB, BSMI, UKCA	
Front Panel Protection	IP65/ NEMA4 Compliant		

Specifications (Cont.)

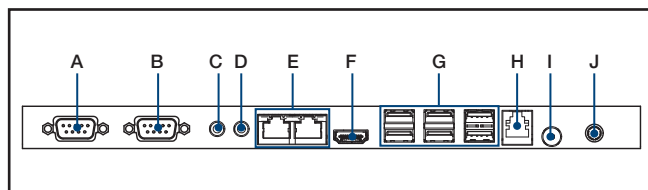
Power Supply	Input Voltage	12V _{DC} *12-30V _{DC} Optional
	Power Consumption	Typical 32W, Max. 70W
	Adapter	12V = 7A, 84W or 12V = 8A, 96W ITE adapter (dependent on stock)
LCD Display	Size	18.5" TFT LCD
	Max Resolution	1366 x 768 (FHD 1920 x 1080 Optional)
	Max Color	16.7M
	Pixel Pitch (um)	100(H) x 300(V) HD/ 213(H) x 213(V) FHD Optional
	Brightness (cd/m ²)	250 (Typical)/ 350 (FHD Optional)
	View Angle	178/178
Touch Screen	Type	Analog Resistive 5-wires (Res. Flat Glass) / Projected Capacitive Touch Panel (Pcap. Flat Glass)
	Light Transmission	Res. Touch: 80% ± 3% / P-Cap Touch: ≥85%
	Controller	COM interface / USB interface
DeviceOn/iService Remote Device Management	Operating System	Windows 10
	Common Controls (Reboot, Shutdown)	✓
	Remote desktop	✓ (VNC)
	Audio Controls	✓*
	Connection Status	✓
	Hardware Status	✓*
	Hard Disk Status	✓*
	Batch Operation Support	✓
	OTA Storage Management	FTP
	OTA Software Updates	✓
	Software Watchlist	✓
Dependant on device model		Software Start/Stop ✓

Note: DeviceOn/iService software must be downloaded from the Advantech website at <https://www.advantech.com/search?q=DeviceOn%2FiService&st=support&ssl=Utility>



Fully-Integrated I/O

UTC-318D/G



- A. COM1
- B. COM2
- C. Line-out (UTC-318D)
Mic-in (UTC-318G)
- D. Mic-in (UTC-318D)
Line-Out (UTC-318G)
- E. LAN ports x 2
- F. HDMI
- G. USB 2.0 x 5 / USB 3.0 x 1 (UTC-318D)
USB 2.0 x 2 / USB 3.0 x 4 (UTC-318G)
- H. RJ-11 (UTC-318G 12V output only)
- I. Power button
- J. DC input 12V

Ordering Information

Part No.	Description
UTC-318DR-ATW0E	18.5" White, Intel® Celeron® J1900, Res T/S, 4 GB RAM, IT Adapter
UTC-318DR-ATB0E	18.5" Black, Intel® Celeron® J1900, Res T/S, 4 GB RAM, IT Adapter
UTC-318DP-ATW0E	18.5" White, Intel® Celeron J1900, PCap T/S, 4 GB RAM, IT Adapter
UTC-318DP-ATB0E	18.5" Black, Intel® Celeron® J1900, PCap T/S, 4 GB RAM, IT Adapter
UTC-318GR-ATW0E	18.5" White, Intel® Pentium® N4200, Res T/S, 4 GB RAM, IT Adapter
UTC-318GR-ATB0E	18.5" Black, Intel® Pentium® N4200, Res T/S, 4 GB RAM, IT Adapter
UTC-318GP-ATW0E	18.5" White, Intel® Pentium® N4200, PCap T/S, 4 GB RAM, IT Adapter
UTC-318GP-ATB0E	18.5" Black, Intel® Pentium® N4200, PCap T/S, 4 GB RAM, IT Adapter

*White Touch Bezel and other CPU configuration could be customized by customer request with MOQ

UTC-318 WiFi Ordering Information

Part No.	Description
UTC-300P-W11E	WiFi Kit for UTC-318D (MiniPCle, WiFi and Bluetooth)
UTC-300P-W12E	WiFi Kit for UTC-318G (M.2 2230, WiFi and Bluetooth)
UTC-300P-W13E	Wifi Kit for UTC-318D
UTC-300P-W14E	Wifi Kit for UTC-318G

Installation Accessory

Part No.	Description
UTC-300P-D20E	Desk Stand, Single Color-Silver (UTC-318/UTC-320 series)
UTC-T01-STANDE	Triangle shape floor stand (UTC-315/UTC-318/UTC-320 series)
UTC-H01-STANDE	H-shaped floor stand (UTC-315/UTC-318/UTC-320 series)
UTC-PANEL-MOUNT5E	Panel Mount Kit (UTC-318 Series)
ARES-12240-AR01100	Wall Mount Kit, support 2~10kg, VESA 75/100mm (Tilttable)
ARES-12250-L101000	Wall Mount Kit, Max. support 25kg, VESA 75/100mm (Fixed)

Peripherals for UTC-300 series

Part No.	Description
UTC-300P-C20E	5M Camera Module, White, for UTC-300 series
UTC-300P-C21E	5M Camera Module, Black, for UTC-300 series
UTC-300P-M20E	Magnet Strip Reader, White, for UTC-300 series
UTC-300P-M21E	Magnet Strip Reader, Black, for UTC-300 series
UTC-300P-R20E	RFID Reader, White, for UTC-300 series
UTC-300P-R21E	RFID Reader, Black, for UTC-300 series
UTC-300P-S20E	Smart Card Reader, White, for UTC-300 series
UTC-300P-S21E	Smart Card Reader, Black, for UTC-300 series
UTC-300P-B60E	2D Barcode Reader, White for UTC-300 series
UTC-300P-B61E	2D Barcode Reader, Black for UTC-300 series

Power Cord Ordering Information

Part NO.	Description
1702002605	Power cord 2P FRANCE 10A/16A 220V 1.83M 90D
1702002600	Power Cord 3P UL/CSA(USA) 125V 10A 1.83M 180D
1700000596-11	Power Cord (China) CCC,10A 250V, 3P 1830mm
1700018704	Power Cord UK BSI 2P 10A 250V 180cm 18AWG
1700000237	Power Cord PSE 3P 12A 125V 183cm
1700001714	Power Cord BSMI 3P 7A 125V 183cm

DeviceOn/iService

Unified Remote Device Management Software



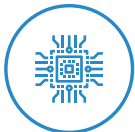
Features

- Supports Advantech devices equipped with Windows, Android, and Linux OS
- Flexible device, location, user, and permissions management
- Enables remote monitoring and control of hardware, software, and peripherals
- Supports over-the-air (OTA) firmware and software updates
- Ensures quick, easy, and secure device onboarding
- RESTful APIs for third-party system integration

Introduction

Advantech's DeviceOn/iService is a next-generation unified device management solution based on the WISE-DeviceOn platform. Designed to enable centralized monitoring and remote management, DeviceOn/iService supports Advantech devices equipped with Windows, Linux, or Android operating systems. The software also supports the management of applications and integrated peripherals, such as a barcode scanner, card reader, camera, and printer. Users can remotely access and control connected devices, take screenshots, rollout OTA upgrades, and use remote desktop capabilities for troubleshooting from any location at any time. Moreover, DeviceOn/iService supports batch operations to facilitate the management of multiple devices simultaneously for easy and convenient device configuration and deployment.

Total Management



Devices & Hardware

- Windows, Linux, Android
- Hardware, storage, battery



Software & Peripherals

- Software monitoring & access
- Screens, USB devices, printers



Open for Expansion

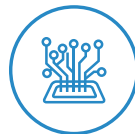
- Peripheral integration
- Open APIs for integration

Remote Access



Real-Time Monitoring

- Connection/hardware status
- Software/peripheral status
- Failure notifications



Remote Controls

- Power controls
- Audio, backlight controls
- Software controls



Troubleshooting

- Screenshots
- Remote desktop support

Operational Efficiency



OTA updates

- System/software updates
- File repository management
- App store



Batch Controls

- 1-to-many batch reboot, etc.
- Time-saving tasks



Setup Booster

- Software/peripheral watchlist
- Roles, rule templates

Note: Some functions may vary according to the product

System Architecture

