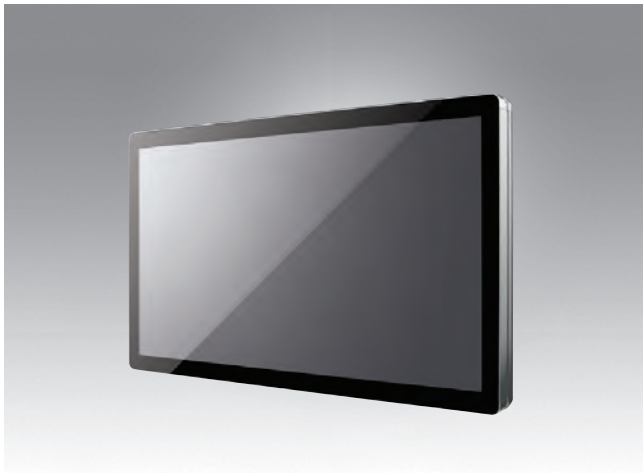


# UTC-520 (IP66 / 69K)

**21.5" Ubiquitous Touch Computer (IP66/69K)**  
**UTC-520GT-ATBOE with Intel® Pentium® N4200**  
**UTC-520FT-ATBOE with Intel® Skylake Core™ i5-6300U**  
**UTC-520IT-ATBOE with Intel® Core™ i5-1145G7E**  
**UTC-520JT-ATBOE with Intel® Celeron® J6412**



## Features

- Low power and fanless system design
- Wide operating temperature range (-10 ~ 50 °C)
- Build in 64G MLC SSD
- 21.5" monitor with 16:9 widescreen display
- IP66/69K rated for full system
- M12 for all I/O ports
- Supports both landscape and portrait screen orientations
- Anit-corrosion enclosure stainless chassis
- Quickly swappable storage slot (optional)
- Waterproof Wifi Solution (optional)
- Build in camera / LED indicter / Light sensor(optional)



## Introduction

UTC-520 tough series features an all-in-one computing system equipped with wide format, touch based LCD panel. It is easy to integrate key peripherals and display systems for diversified self-service and interactive signage deploy in different application areas. The systems deliver updated information with well-designed interactive interfaces, fully ensure relevant content and targeted promotions are delivered. UTC series touch panel computers are the best investments to enhance user satisfaction, further brand equity, and maximize business profits.

## Specifications

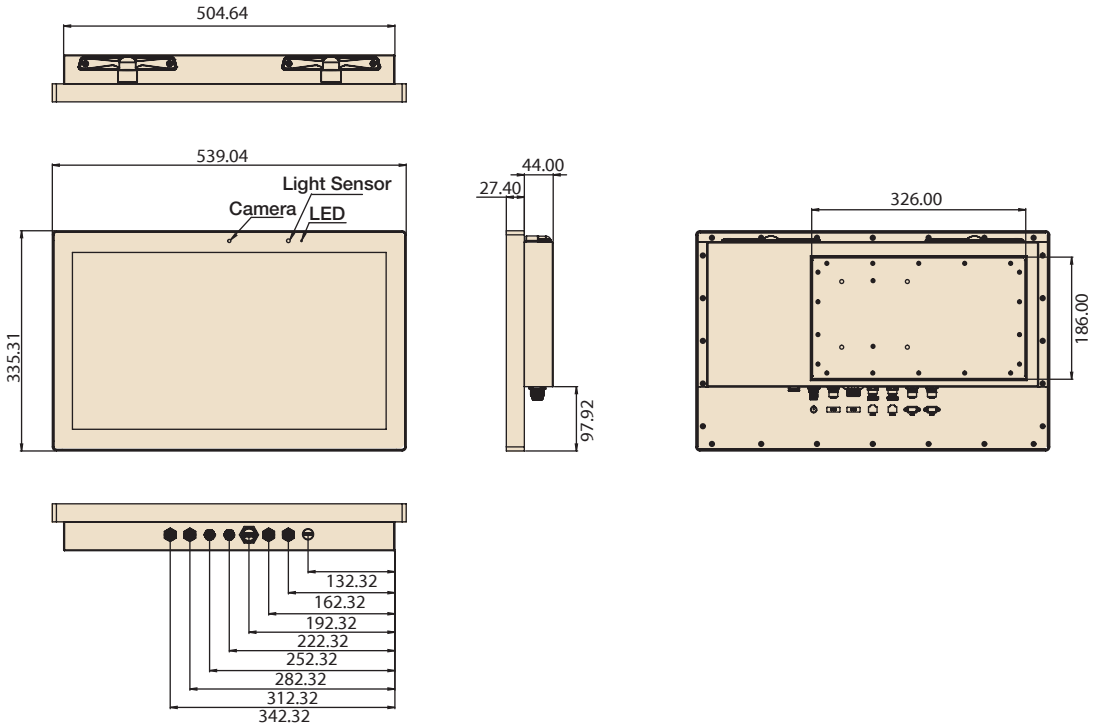
| Model                        | UTC-520GT-ATBOE  | UTC-520FT-ATBOE  | UTC-520IT-ATBOE                                  | UTC-520JT-ATBOE  |   |
|------------------------------|--|--|--|--|---|
| Processor System             | CPU  | Intel® Pentium® N4200  | Intel® Skylake Core™ i5-6300U                    | Intel® Core™ i5-1145G7E  | Intel® Celeron® J6412   |
|                              | Base Frequency   | 1.1 GHz (N4200/Quad-Core)<br>1.6 GHz (E3950/Quad-Core)   | 2.4GHz (Dual-Core)                               | 1.50/ 2.6 GHz/ Quad Core   | 2.0GHz  |
|                              | Cache  | L2 Cache 2MB   | L3 Cache 3MB                                     | L3 Cache 6MB   | 1.5 MB L2 Cache   |
|                              | Memory   | 1 x 204 pin SO-DIMM DDR3L<br>1867 MHz up to 8GB  | 2 x 204 pin SO DIMM DDR3L<br>1600MHz up to 16 GB | 2 x 260 pin SO-DIMM DDR4-<br>3200 up to 64GB   | DDR4-3200 up to 32GB  |
|                              | HDD  | 1 x 2.5 internal SATA HDD bay  |  |  |   |
|                              | Network (LAN)  | 2 x Gigabit Ethernet ports (Supports Wake on LAN)  |  |  |   |
|                              | I/O ports  | 2 x RS-232 COM (RS-422/485)*<br>2 x USB 2.0/ 1 x USB 3.0<br>2 x Gigabit Ethernet (RJ-45)<br>(M12 waterproof connector) |  |  |   |
|                              | Bus expansion  | Full-size MiniPCIe / M.2   | Full-size MiniPCIe / mSATA                       | 1 x E-Key 2230 (PCIe x1,<br>USB2.0, I2C)<br>M.2 B-Key 1 x B-Key 3042<br>(USB2.0) w/ Nano-SIM<br>M.2 M-Key 1 x M-Key 2280<br>(PCIe x4 Gen.4 for PCIe SSD),<br>optional SATA | 1x E-Key for wireless module<br>(Type: 2230)<br>optional B-Key for LTE module<br>1x M-Key support SATA M.2<br>2242 module |
|                              | Mounting   | VESAs 100 x 100 mm   |  |  |   |
|                              | Dimensions (W x H x D)                                     | 540 x 336 x 70 mm  |  |  |   |
| Weight                       | 10.5 kg (23.14lbs)   |  |  |  |   |
| OS Support                   | Win 10 IoT Enterprise<br>Android 8.1<br>Linux Ubuntu 18.04 |  | Win 10 IoT Enterprise<br>Linux Ubuntu 18.04      |  | Win 10 IoT Enterprise<br>Android  |
|                              | Operating Temperature                                      | -10 ~ 50 °C  |  |  |   |
| Environmental Specifications | Relative Humidity  | 10 ~ 95% @ 40° C non-condensing  |  |  |   |
|                              | Vibration  | 0.5G   |  |  |   |
|                              | Shock  | 5G peak acceleration (11 msec. duration)   |  |  |   |
|                              | EMC/ Safety  | CE, FCC, UL, CB, CCC, BSMI   |  |  |   |
|                              | System Protection  | IP65 Full System   |  |  |   |
| Power Supply                 | Input Rating   | DC input 24V / 5A  |  |  |   |
|                              | Power consumption  | Typical 40W<br>Max. 50W  |  |  |   |
| LCD Display                  | Size/Type  | 21.5" TFT LCD with LED backlight   |  |  |   |
|                              | Max.Resolution   | 1920 x 1080  |  |  |   |
|                              | Max. Color   | 16.7M  |  |  |   |
|                              | Pixel Pitch (um)   | 248.25 (H) x 248.25 (V)  |  |  |   |
|                              | Brightness (cd/m²)   | 250 Nits, Optional 400 and 1200 Nits Panel   |  |  |   |
|                              | View Angle   | 178°/178°  |  |  |   |
|                              | Camera   | Optional   |  |  |   |
| Light Sensor w LED Indicator | Optional   |  |  |  |   |
| Touch Screen Option (PE/GE)  | Type   | Projected Capacitive. Glass Panel (7H Hardness)  |  |  |   |
|                              | Cover Glass Surface Treatment                              | Optional (AR / AG / Vandal Proof)  |  |  |   |
|                              | Light Transmission   | 88% ± 2%   |  |  |   |
|                              | Controller   | USB Interface  |  |  |   |

# UTC-520 (IP66/69K)

## Dimensions

Unit: mm

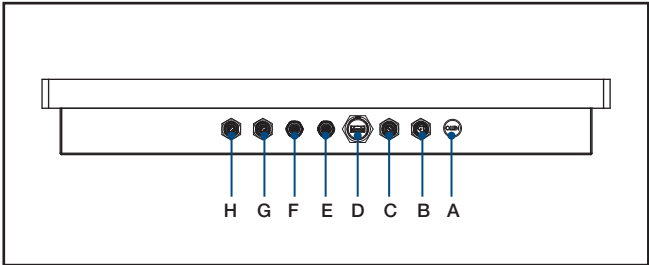
### UTC-520GT-ATB0E



## Ordering Information

| Part No.        | Description  |
|-----------------|--|
| UTC-520GT-ATB0E | 21.5" PCT.T/S with Pentium N4200, 4GB RAM, 64G SSD, IP66/69K         |
| UTC-520FT-ATB0E | 21.5" PCT.T/S with i5 6300U, 4GB RAM, 64G SSD, IP66/69K              |
| UTC-520IT-ATB0E | 21.5" PCT.T/S with i5-1145G7E, 4GB RAM, 64G SSD, IP66/69K            |
| UTC-520JT-ATB0E | 21.5" PCT.T/S with Intel® Celeron® J6412, 4GB RAM, 64G SSD, IP66/69K |
| 1702002605      | Power cord 2P FRANCE 10A/16A 220V 1.83M 90D                          |
| 1702002600      | Power Cord 3P UL/CSA(USA) 125V 10A 1.83M 180D                        |
| 1700000596      | Power Cord (China) CCC,10A 250V, 3P 1.83M                            |
| 1700018704      | Power Cord UK BSI 2P 10A 250V 1.8M 18AWG                             |
| Y5A0520000      | Cable M-DIN 4P(F)/waterproof 5P 1M                                   |
| Y5A0520001      | A cable RJ45-8P8C/waterproof 8P 1M                                   |
| Y5A0520002      | M cable waterproof /USB-A 4P*2 1M                                    |
| Y5A0520003      | M Cable USB-A 9P(F)/Waterproof USB 9P(M) 1M                          |
| Y5A0520004      | M Cable 1*9 P D-SUB/waterproof 10P 1M                                |

## Fully- Integrated I/O (UTC-520 IP66/69K)



- A. Exhaust Valve
- B. Power Connector
- C. USB 2.0 x 2
- D. USB 3.0 x 1
- E. LAN 1
- F. LAN 2
- G. COM 1
- H. COM 2

# DeviceOn/iService

## Unified Remote Device Management Software



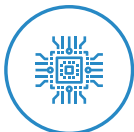
### Features

- Supports Advantech devices equipped with Windows, Android, and Linux OS
- Flexible device, location, user, and permissions management
- Enables remote monitoring and control of hardware, software, and peripherals
- Supports over-the-air (OTA) firmware and software updates
- Ensures quick, easy, and secure device onboarding
- RESTful APIs for third-party system integration

### Introduction

Advantech's DeviceOn/iService is a next-generation unified device management solution based on the WISE-DeviceOn platform. Designed to enable centralized monitoring and remote management, DeviceOn/iService supports Advantech devices equipped with Windows, Linux, or Android operating systems. The software also supports the management of applications and integrated peripherals, such as a barcode scanner, card reader, camera, and printer. Users can remotely access and control connected devices, take screenshots, rollout OTA upgrades, and use remote desktop capabilities for troubleshooting from any location at any time. Moreover, DeviceOn/iService supports batch operations to facilitate the management of multiple devices simultaneously for easy and convenient device configuration and deployment.

### Total Management



#### Devices & Hardware

- Windows, Linux, Android
- Hardware, storage, battery



#### Software & Peripherals

- Software monitoring & access
- Screens, USB devices, printers



#### Open for Expansion

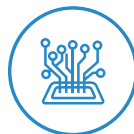
- Peripheral integration
- Open APIs for integration

### Remote Access



#### Real-Time Monitoring

- Connection/hardware status
- Software/peripheral status
- Failure notifications



#### Remote Controls

- Power controls
- Audio, backlight controls
- Software controls



#### Troubleshooting

- Screenshots
- Remote desktop support

### Operational Efficiency



#### OTA updates

- System/software updates
- File repository management
- App store



#### Batch Controls

- 1-to-many batch reboot, etc.
- Time-saving tasks



#### Setup Booster

- Software/peripheral watchlist
- Roles, rule templates

Note: Some functions may vary according to the product

### System Architecture

