

BVS CA-SF2-xxxxxx-(1)(2)(3)(4)(5)(6)-001

BVS CA-SF2-xxxxxx-(1)(2)(3)(4)(5)(6)-001 / mvBlueFOX3-2
USB3 Vision industrial camera

xxxxxx Model
See table below

(1) Handling
1 = standard handling
2 = extended temperature range test

(2) Lensholder
1 = C-Mount, Type2, with high durability and factory-set backfocus, fixed square filter
2 = C-Mount, Type1, with adjustable backfocus, round filter with screw ring, $\varnothing 23.2$ mm
B = C-Mount, Type2, high durability, filter screwable

(3) Filter
0 = without filter
1 = IR-Cut
2 = glass filter
More filters on request

(4) Housing
1 = standard housing, black with logo, aluminium

(5) I/O
0 = without I/Os
2 = standard I/Os

(6) Software
0 = none

Industrial Cameras
BVS CA-SF2 - Standard



Model name	Matrix Vision model name	Resolution	FPS*	Sensor	Pixel size	Power**
BVS CA-SF2-	mvBlueFOX3-2					
0004FG/C	004G/C	0.4 MP (728 x 544)	436.9/436.9	IMX287 (1/2.9", GS, CMOS)	6.9 µm	3.2 W
0013SG	013sG	1.3 MP (1296 x 1032)	125.0/125.0	IMX990 (1/2", GS, CMOS)	5 µm	2.1 W
0016ZG/C	016G/C	1.6 MP (1456 x 1088)	226.5/226.5	IMX273 (1/2.9", GS, CMOS)	3.45 µm	3.5 W
0017ZG/C	017G/C	1.7 MP (1600 x 1104)	213.2/213.2	IMX425 (1.1", GS, CMOS)	9 µm	4.5 W
0024ZG/C	024G/C	2.4 MP (1936 x 1216)	164/161.4	IMX174 (1/1.2", GS, CMOS)	5.86 µm	3.4 W
0024AG/C	024aG/C	2.4 MP (1936 x 1216)	46.9/46.9	IMX249 (1/1.2", GS, CMOS)	5.86 µm	2.8 W
0024BG/C	024bG/C	2.4 MP (1936 x 1216)	166/161.4	IMX392 (1/2.3", GS, CMOS)	3.45 µm	tbd W
0032ZG/C	032G/C	3.2 MP (2064 x 1544)	123/119.2	IMX252 (1/1.8", GS, CMOS)	3.45 µm	3.6 W
0032AG/C	032aG/C	3.2 MP (2064 x 1544)	55/55	IMX265 (1/1.8", GS, CMOS)	3.45 µm	3.0 W
0051ZG/C	051G/C	5.1 MP (2464 x 2056)	80/75	IMX250 (2/3", GS, CMOS)	3.45 µm	3.6 W
0051PG/C	051pG/C	5.1 MP (2464 x 2056)	80/75	IMX250_POL (2/3", GS, CMOS)	3.45 µm	3.6 W
0051AG/C	051aG/C	5.1 MP (2464 x 2056)	35/35	IMX264 (2/3", GS, CMOS)	3.45 µm	3.0 W
0051DG/C	051dG/C	5.1 MP (2472 x 2064)	74.0/74.0	IMX547 (1/1.8", GS, CMOS)	2.74 µm	2.7 W
0064ZG/C	064G/C	6.4 MP (3096 x 2080)	60/59	IMX178 (1/1.8", RS, CMOS)	2.4 µm	2.9 W
0071ZG/C	071G/C	7.1 MP (3216 x 2208)	60.2/53.5	IMX420 (1.1", GS, CMOS)	4.5 µm	4.4 W
0071AG/C	071aG/C	7.1 MP (3216 x 2208)	50.9/50.9	IMX428 (1.1", GS, CMOS)	4.5 µm	4.0 W
0081AG/C	081aG/C	8.1 MP (2856 x 2848)	48.0/46.7	IMX546 (2/3", GS, CMOS)	2.74 µm	2.7 W
0089ZG/C	089G/C	8.9 MP (4096 x 2176)	47/42.6	IMX255 (1", GS, CMOS)	3.45 µm	4.0 W
0089AG/C	089aG/C	8.9 MP (4096 x 2176)	31.9/31.9	IMX267 (1", GS, CMOS)	3.45 µm	4.0 W
0124ZG/C	124G/C	12.4 MP (4096 x 3008)	34/30.8	IMX253 (1.1", GS, CMOS)	3.45 µm	4.0 W
0124AG/C	124aG/C	12.3 MP (4096 x 3008)	23/23	IMX304 (1.1", GS, CMOS)	3.45 µm	4.0 W
0124RG/C	124rG/C	12.4 MP (4064 x 3044)	35.4/30.7	IMX226 (1/1.7", RS, CMOS)	1.85 µm	2.9 W
0124DG/C	124dG/C	12.4 MP (4128 x 3008)	33.0/30.6	IMX545 (1/1.1", GS, CMOS)	2.74 µm	2.7 W
0162AG/C	162G/C	16.2 MP (5328 x 3040)	26.3/23.4	IMX542 (1.1", GS, CMOS)	2.74 µm	3.0 W
0204AG/C	204G/C	20.4 MP (4512 x 4512)	20.9/18.6	IMX541 (1.1", GS, CMOS)	2.74 µm	3.2 W
0205ZG/C	205G/C	20.5 MP (5544 x 3692)	21.98/18.5	IMX183 (1", RS, CMOS)	2.4 µm	2.9 W
0246AG/C	246G/C	24.6 MP (5328 x 4608)	17.6/15.4	IMX540 (1.2", GS, CMOS)	2.74 µm	4.0 W

G/C = Mono and color available

FPS = Frames per Second

GS = Global Shutter

RS = Rolling Shutter

* = Burst Mode/Streaming

** = Typical value

Basic features

Standards	GenICam EMVA 1288 USB3 Vision
------------------	-------------------------------------

Electrical connection

Connection 1	USB3: MicroB-Female, 9-pin
Connection 2	Optional: Power / IO: HIROSE- Male, 12-pin
Polarity reversal protected	yes
Short-circuit protection	no

Electrical data

Current draw peak	0.5 A
Operating voltage U_b	10...28 VDC
Ripple max. (% of U_e)	5 %

Environmental conditions

Ambient temperature	0...45 °C
EN 60068-2-27, Shock	-
EN 60068-2-6, Vibration	-
IP rating	IP30
Relative humidity	20...80%
Storage temperature	-20...60 °C

Remarks

Not included in scope of delivery: Camera lens, filter, light, connection cable, power supply

* Refer to manual for exact values

For more information about MTTF and B10d see MTTF / B10d Certificate

Indication of the MTTF- / B10d value does not represent a binding composition and/or life expectancy assurance; these are simply experiential values with no warranty implications. These declared values also do not extend the expiration period for defect claims or affect it in any way.

Functional Characteristics

Binning	1x1...16x16 *
Data storage	256 MB
Decimation	1x1...16x16 *
Exposure time	10 µs...20 s *
Filter	IR cut filter
Image formats	Mono8...Mono16 Bayer8...Bayer16, RGB, YUV *
Trigger Modi	Free run Hardware trigger Software trigger

Interface

Digital inputs	2x PNP galvanically isolated
Digital outputs	4x PNP galvanically isolated
Interface	USB 2.0 / 3.0
Switching function	normally open (NO)

Material

Housing material	Aluminium, Powder coated, Painted
-------------------------	--------------------------------------

Mechanical data

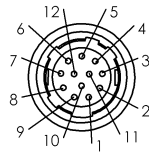
Lens mount	C-Mount
Weight	110 g

Connector Diagram

USB3 (MicroB)



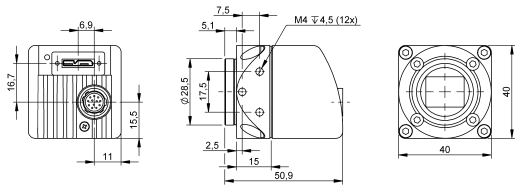
Power / IO (Hirose) - optional



- PIN 1: GND
- PIN 2: PWR_IN
- PIN 3: Opto DigOut3
- PIN 4: Opto DigIn0
- PIN 5: Opto DigOut2
- PIN 6: Opto DigOut0
- PIN 7: Opto DigIn_GND
- PIN 8: RS232 RX
- PIN 9: RS232 TX
- PIN10: Opto DigOut_PWR_IN
- PIN11: Opto DigIn1
- PIN12: DigOut1

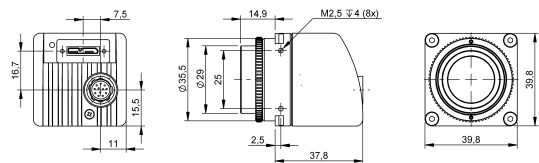
Product View

BVS_CA-SF2-xxxxxx-x1x12x / -x5x12x / -xBx12x



Threads: 12 (-x1x500/-xBx500)

BVS_CA-SF2-xxxxxx-x2x12x



BVS_CA-SF2-xxxxxx-x00500

